

# SKYPASS

Our SkyPass VSAT solution is ideal for organizations and corporations that need to setup a continuous high-speed data link between any two remote sites, in practically any location throughout Indonesia whether in a remote village or a crowded city. By installing a VSAT terminal at each site, a dedicated satellite link is established between them at a pre-defined bandwidth.

Our SkyPass solution is similar to the terrestrial leased line circuit, except that the sites are connected directly over satellite bypassing terrestrial wireline interconnections. Direct wireless link over satellite gives a consistent quality of service with superior performance and security.

When organizations bandwidth requirement grow, the VSAT terminal in each site can be reconfigured from our Network Operations Center. Typical applications that run on the SkyPass system are:

- Data networking
- Internet service providers
- Wide - area LAN internetworking
- Disaster recovery
- Load balancing
- Multimedia image transfer
- Batch and interactive data transmission

This dedicated satellite link can be connected to a router or a multiplexer that integrates data and voice traffic. Our SkyPass system supports bandwidth rate from as low as 4.8 Kbps to 64 Kbps.



# SkyPass

## Skypass VSAT terminal

*Data Interface* : Female DB-25/RS-232, full duplex, configured as DCE

*Data Rates* : 4.8 - 64 Kbps (sync)  
4.8 - 19.2 Kbps (async)  
Rate settings: 4,800 / 9,600 / 19,200 / 56,000 / 64,000 bps

*Data Protocol* : Protocol independent

## Multiplexer Specification (optional)

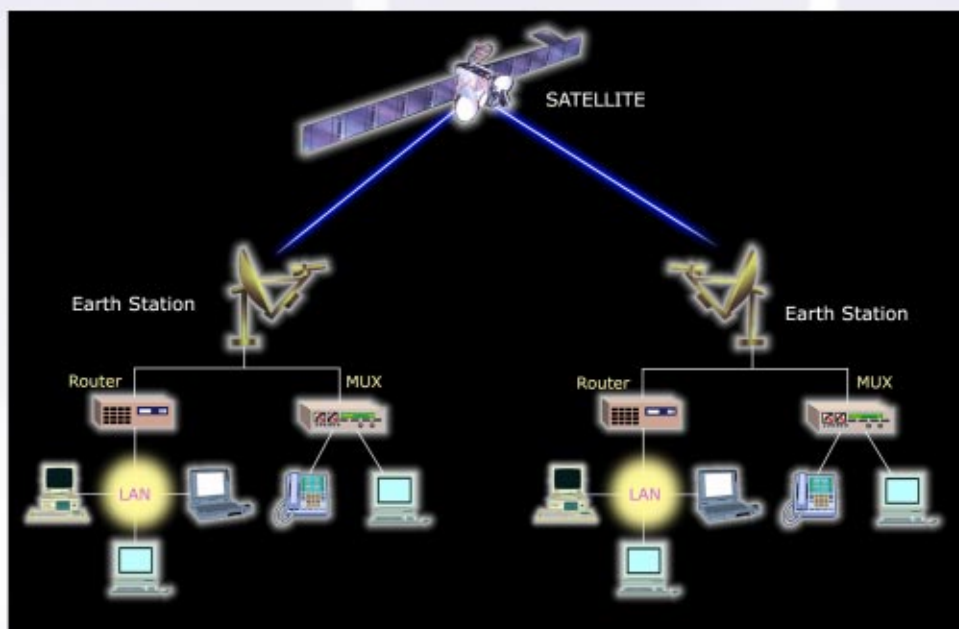
*Multiplexer Technology* : MicroBand ATM - dynamically combines voice, fax, async and sync data onto one satellite link

*Data Ports* : 4 data ports

- DB25 / RS-232
- Port rate : up to 19,200 bps per port
- Support async and sync data connection

*Voice Ports* : 2 voice ports

- Standard interfaces: E&M Type I, FXS Loopstart, FXO Loopstart, FAX
- Enhanced interfaces: E&M Types I, II and V; FXS Loopstart, FXO Loopstart
- Voice digitization rates: 4.0 to 16.0 Kbps
- Group 3 fax rates: 2.4 to 9.6 Kbps



**Mailing Address:** PT. Telesindo Mulia  
Wisma Hayam Wuruk, 3/F  
8, Jl. Hayam Wuruk  
Jakarta 10120

Tel : (+62-21) 386-1482  
Fax : (+62-21) 386-1426

Email: [mktg@telesindo.com](mailto:mktg@telesindo.com)  
Web: [www.telesindo.com](http://www.telesindo.com)

